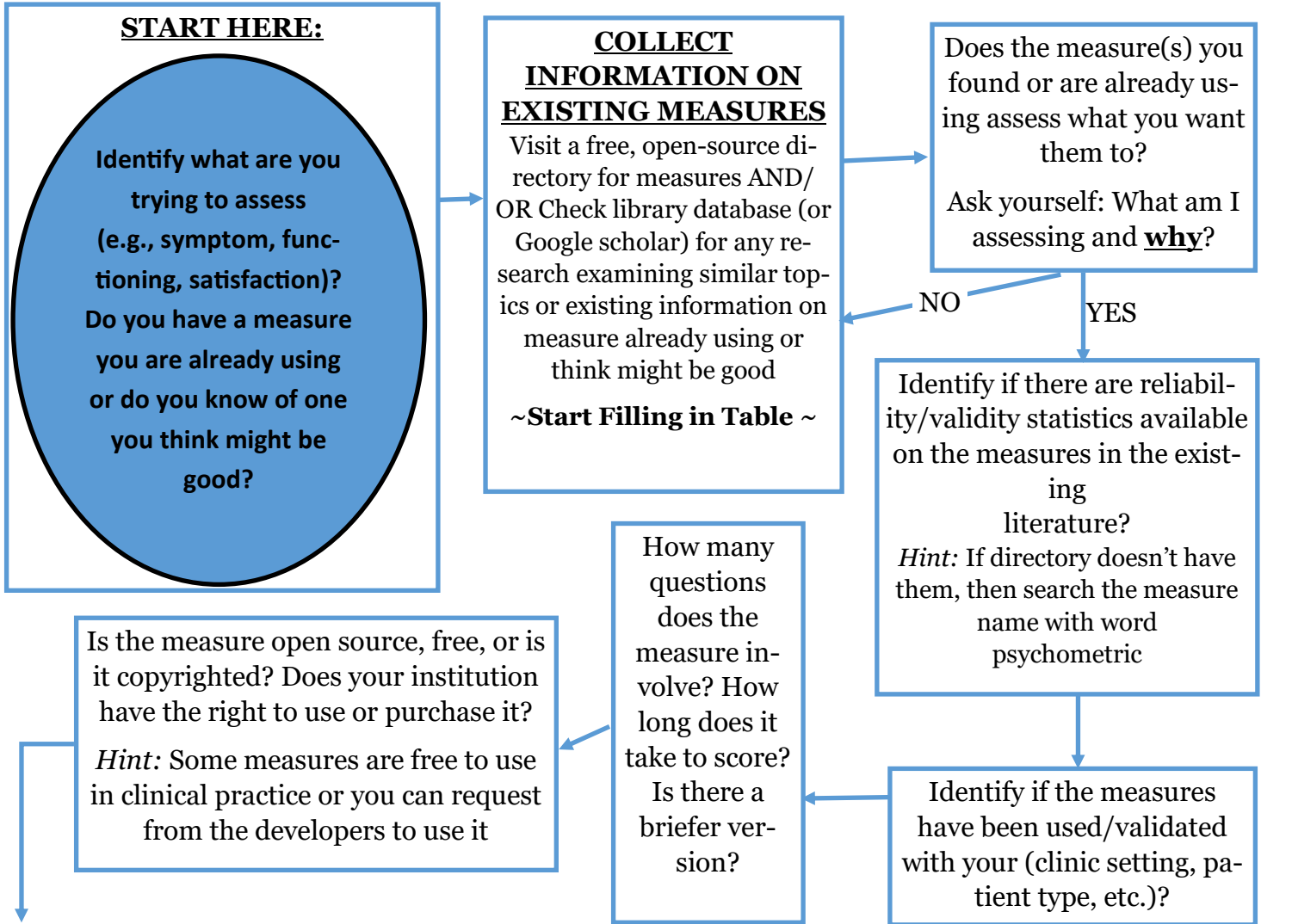


# Measurement Selection Decision Tool



Julie Gass, Ph.D. & Jennifer S. Funderburk, PhD



**FINAL STEP: Consider importance of psychometrics, feasibility, and cost of measures you find with goals of the project**

	Measure Name	Measure Name	Measure Name	Measure Name
What does it assess?				
Reliability Statistics				
Validity Statistics				
Setting/Population				
Number of Questions/Time to Implement				
Time to Score				
Copyrighted?				

Note: Reliability is considered strong when internal consistency >0.7; intraclass correlation >0.75  
Validity is considered strong when sensitivity/specificity is >~70% )

Resource Name	Organization	Website	Includes
<i>Measuring Mental Health Outcomes in Built Environment Research</i>	The Center for Urban Design and Mental Health	<a href="http://www.urbandesignmentalhealth.com/how-to-measure-mental-health.html">www.urbandesignmentalhealth.com/how-to-measure-mental-health.html</a>	-List of validated assessment tools and their features for mental health outcomes
<i>Validated Measures for Research with Vulnerable &amp; Special Populations</i>	University of California San Francisco Clinical & Translational Science Institute	<a href="http://consult.ucsf.edu/guidance/special-populations-measures">consult.ucsf.edu/guidance/special-populations-measures</a>	-Measures designed for use across several domains, including social factors, healthcare experience, disability, and IPV -Measures aimed toward primary data collection for NIH-termed “special populations”
<i>RAND Health Care Surveys</i>	RAND Corporation	<a href="http://www.rand.org/health-care/surveys_tools.html">www.rand.org/health-care/surveys_tools.html</a>	-Measures across several healthcare domains, including aging, health economics, mental health, maternal health, and more
<i>Validated Measurement Tools and Assessments</i>	Metrowest Health Foundation	<a href="http://www.mwhealth.org/Portals/0/Uploads/Documents/Validated%20Measurement%20Tools%20List.pdf">www.mwhealth.org/Portals/0/Uploads/Documents/Validated%20Measurement%20Tools%20List.pdf</a>	-List of measures on several domains (e.g., PHQ-9, nutritional assessment, self-efficacy scales, etc.) -Links to full-text measures
<i>Atlas of Instruments to Measure Team-based Primary Care (the Team Care Measures Atlas)</i>	U.S. Department of Health & Human Services, Agency for Healthcare Research and Quality	<a href="https://primarycaremeasures.ahrq.gov/team-based-care/">https://primarycaremeasures.ahrq.gov/team-based-care/</a>	-Inventory of 48 instruments that can be used to measure aspects of team-based care primary care
<i>Primary Care-Mental Health Integration Measures</i>	VA Center for Integrated Healthcare	<a href="http://www.mirecc.va.gov/cih-visn2/clinical_resources.asp">www.mirecc.va.gov/cih-visn2/clinical_resources.asp</a>	-Links to several brief, integrated PC measures including the PHQ-9, GAD-7, BAM, PCL-5, AUDIT-C, and PPAQ
<i>PROMIS (Patient Reported Outcomes Measurement Information System-Health Measures)</i>	US Department of Health and Human Services	<a href="http://www.healthmeasures.net/explore-measurement-systems/promis">http://www.healthmeasures.net/explore-measurement-systems/promis</a>	-Measures developed to be person-centered designed to enhance communication between clinicians and patients